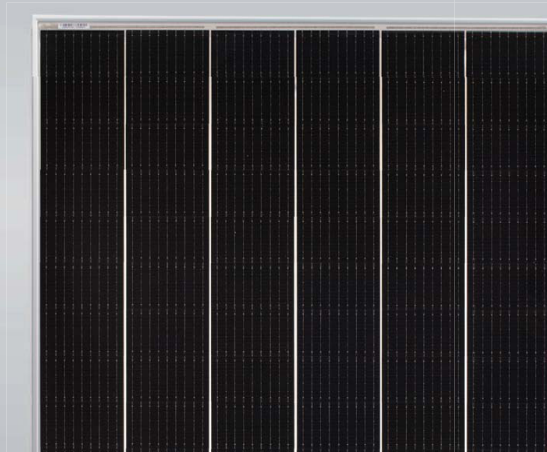


Tiger Mono-facial 385-405 Watt

Tiling Ribbon (TR) Technology

Positive power tolerance of 0~+5W

(Made in China/Malaysia/U.S/Vietnam)



KEY FEATURES



TR technology + Half Cell

TR technology with Half cell aims to eliminate the cell gap to increase module efficiency (mono-facial up to 21.22%)



9BB instead of 5BB

9BB technology decreases the distance between bus bars and finger grid line which is benefit to power increase.



Higher lifetime Power Yield

2.5% first year degradation,
0.6% linear degradation



Best Warranty

12 year product warranty,
25 year linear power warranty



Avoid debris, cracks and broken gate risk effectively

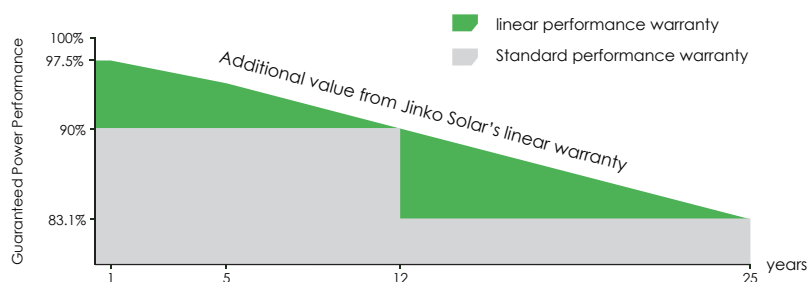
9BB technology using circular ribbon that could avoid debris, cracks and broken gate risk effectively



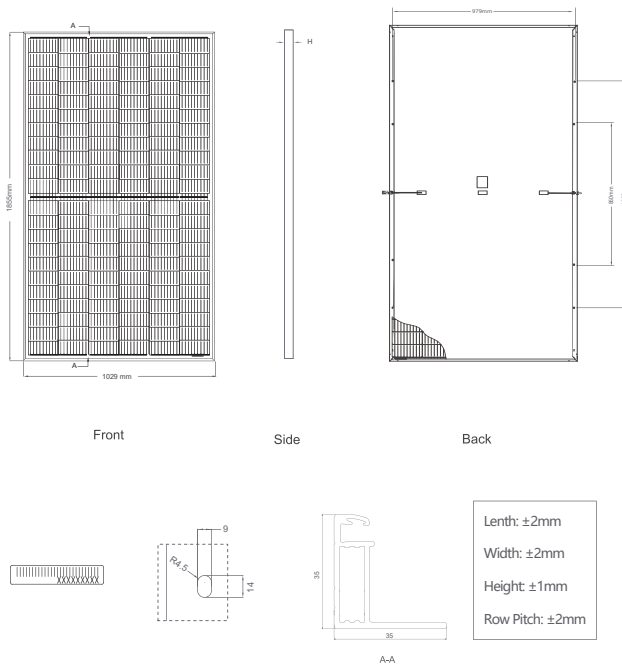
- ISO9001:2015, ISO14001:2015, OHSAS18001 certified factory
- IEC61215, IEC61730 certified product

LINEAR PERFORMANCE WARRANTY

12 Year Product Warranty 25 Year Linear Power Warranty
0.6% Annual Degradation Over 25 years



Engineering Drawings

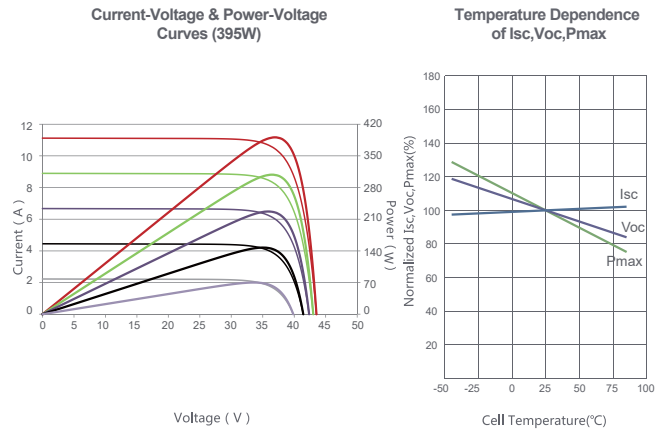


Packaging Configuration

(Two pallets = One stack)

30pcs/pallets, 60pcs/stack, 720pcs/ 40'HQ Container

Electrical Performance & Temperature Dependence



Mechanical Characteristics

Cell Type	P type Mono-crystalline
No. of cells	132 (2×66)
Dimensions	1855×1029×35mm (73.03×40.51×1.37 inch)
Weight	22.1 kg (48.72 lbs)
Front Glass	3.2mm, Anti-Reflection Coating, High Transmission, Low Iron, Tempered Glass
Frame	Anodized Aluminium Alloy
Junction Box	IP67 Rated
Output Cables	TUV 1×4.0mm ² (+): 290mm, (-): 145 mm or Customized Length
Fire Rating	Class C
Connector	JK03M/1B, Genuine MC4

SPECIFICATIONS

Module Type	JKM385M-6RL3		JKM390M-6RL3		JKM395M-6RL3		JKM400M-6RL3		JKM405M-6RL3	
	STC	NOCT	STC	NOCT	STC	NOCT	STC	NOCT	STC	NOCT
Maximum Power (Pmax)	385Wp	286Wp	390Wp	290Wp	395Wp	294Wp	400Wp	298Wp	405Wp	301Wp
Maximum Power Voltage (Vmp)	36.39V	33.50V	36.49V	33.66V	36.58V	33.82V	36.67V	33.90V	36.76V	34.05V
Maximum Power Current (Imp)	10.58A	8.55A	10.69A	8.62A	10.80A	8.69A	10.91A	8.78A	11.02A	8.85A
Open-circuit Voltage (Voc)	43.66V	41.12V	43.75V	41.20V	43.93V	41.38V	44.12V	41.55V	44.30V	41.73V
Short-circuit Current (Isc)	11.30A	9.13A	11.39A	9.20A	11.48A	9.27A	11.57A	9.34A	11.66A	9.42A
Module Efficiency STC (%)	20.17%		20.43%		20.69%		20.96%		21.22%	
Operating Temperature(°C)	-40°C~+85°C									
Maximum system voltage	1000VDC (IEC)									
Maximum series fuse rating	20A									
Power tolerance	0~+5W									
Temperature coefficients of Pmax	-0.35%/°C									
Temperature coefficients of Voc	-0.28%/°C									
Temperature coefficients of Isc	0.048%/°C									
Nominal operating cell temperature (NOCT)	45±2°C									

* STC: Irradiance 1000W/m² Cell Temperature 25°C

AM=1.5

NOCT: Irradiance 800W/m² Ambient Temperature 20°C

AM=1.5

Wind Speed 1m/s

* Power measurement tolerance: $\pm 3\%$
sorting tolerance: 0~+5W